

Lincolnshire Old Churches Trust
Summary Balance Sheet
for the years 2004 and 2005

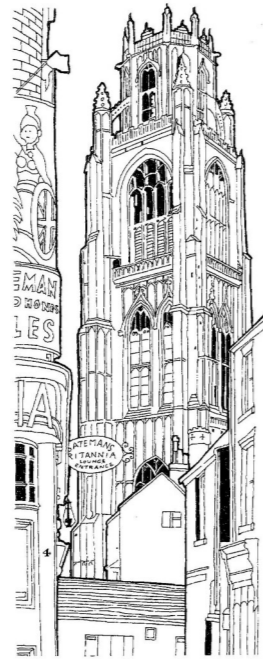
	Total Funds 2005 £	Total Funds 2004 £
FIXED ASSETS		
Investments	169,666	148,527
CURRENT ASSETS		
Stocks	1,177	988
Debtors	6,026	10,205
Investments	—	79,932
Cash at bank	473,896	498,512
	481,099	589,637
CREDITORS: Amounts falling due within one year	(300,162)	(177,417)
NET CURRENT ASSETS	180,937	412,220
TOTAL ASSETS LESS CURRENT LIABILITIES	350,603	560,747
FUNDS		
Unrestricted:		
Designated funds	62,973	53,666
Other charitable funds	270,081	222,312
Restricted	17,549	284,769
	350,603	560,747

Independent Examiners: Streets LLP
87 Park Road, Peterborough

Registered Charity No : 509021

Full copies of the financial statements for any year may be obtained from the Treasurer on payment of copying and postage charges.

Registered Office: Tower House, Lucy Tower Street, Lincoln LN1 1XW



The world famous church of St Botolph at Boston. Drawn by the Reverend Canon John Bayley for the Trust.

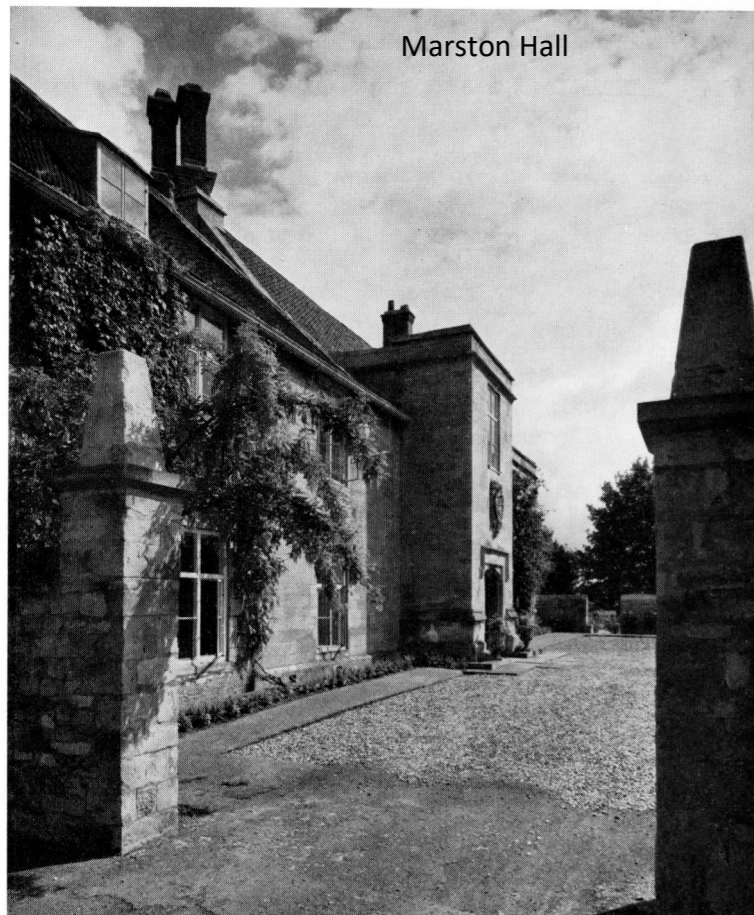


Haugham All Saints ~ photo by Peter Burton



Markby St Peter ~
the only thatched church in the County

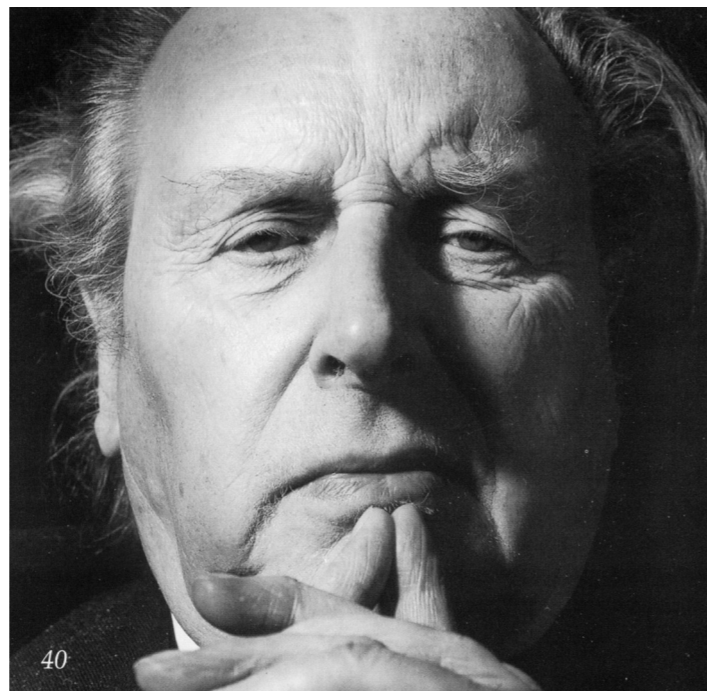
9



Marston Hall

The Reverend Henry Thorold

Appointed a Trustee in 1970 by Lord Ancaster and was Chairman of the Trust from 1983 until reluctantly forced to retire due to ill health in 1998 when he was appointed an Honorary Vice President.



40

An early 14thC door at
Pickworth St Andrew



Saxon stonework at Broughton St Mary

